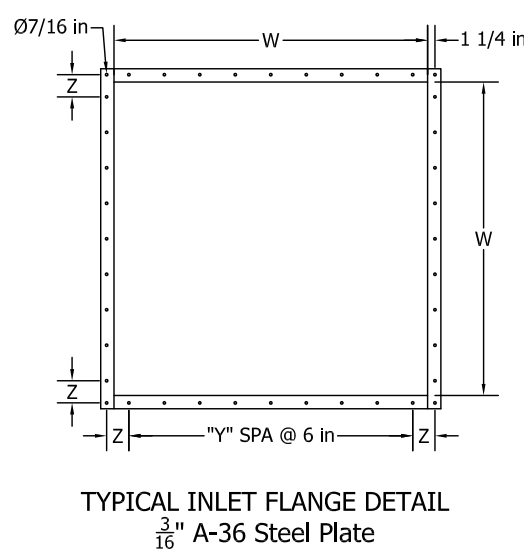
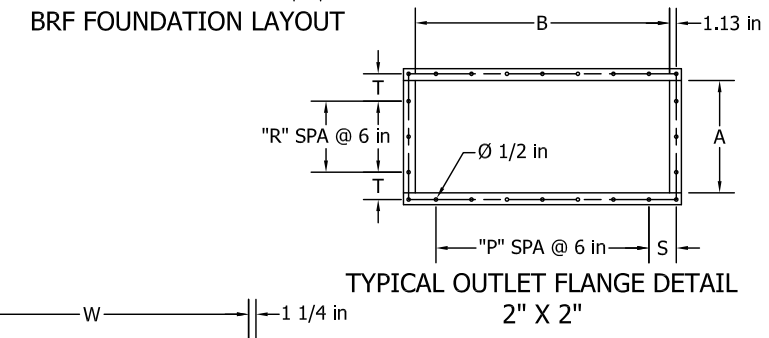
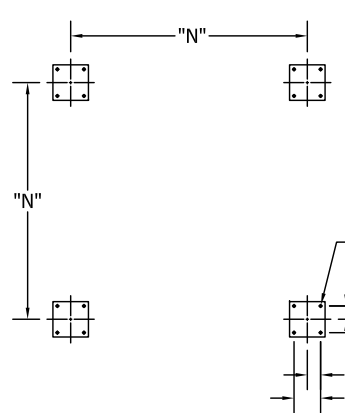
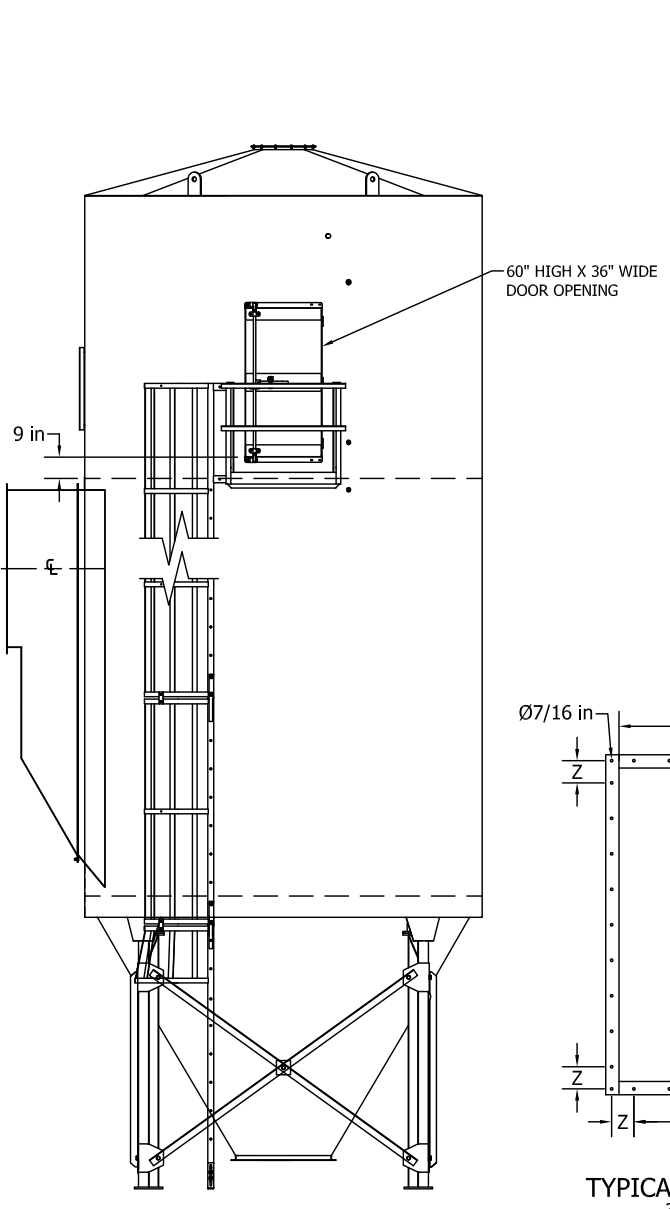
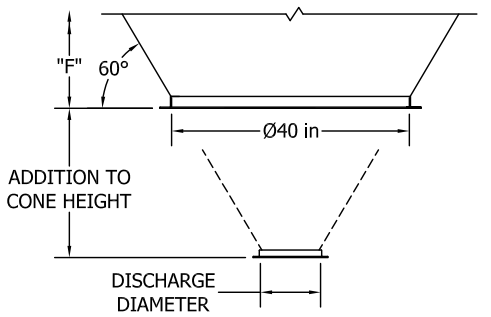


MODEL PROPERTIES								FILTER DIMENSIONS																			
MODEL	UNIT DIA. FT.	NO. BAGS	BAG LENGTH FT.	CLOTH AREA (SQ. FT.)	BLOWER H.P.	WT (Lbs.)	MATERIAL	A	B	C	D	F	G	H	J	K	L	M	N	P	R	S	T	V	W	Y	Z
7BRF112-8	7	112	8	1175	3	7400	10 GAUGE	18	40	44 1/4	84	39	121	277 5/8	108	9 11/16	145	75	54 1/2	6	2	3 1/4	4 1/4	63	27	3	5 3/4
7BRF112-10			10	1466		8000	10 GAUGE						125	293 1/8	119 1/2		148	76							29	4	3 3/4
7BRF112-12			12	1759		8600	10 GAUGE						129	320 7/8	143 1/4		150	78							33	4	5 3/4
8BRF152-8	8	152	8	1594	3	8500	10 GAUGE	21	47	50 1/4	96	49 3/8	125	293 5/8	108	11 5/16	158 3/8	76	63	7	2	3 5/8	5 5/8	80	29	4	3 3/4
8BRF152-10			10	1990		9200	10 GAUGE						129	309 1/8	119 1/2		160 3/8	78							33	4	5 3/4
8BRF152-12			12	2388		9800	10 GAUGE						132	335 7/8	143 1/4		161 7/8	79 1/2							36	5	4 1/4
10BRF256-8	10	256	8	2685	5	11300	10 GAUGE	24	54	62 1/4	120	70 1/8	134	326 5/8	108	14 1/2	183 5/8	80 1/2	80	8	3	4 1/8	4 1/8	88	38	5	5 1/4
10BRF256-10			10	3351		12100	10 GAUGE						138	342 1/8	119 1/2		185 5/8	82 1/2							42	6	4 1/4
10BRF256-12			12	4022		13000	10 GAUGE						142	369 7/8	143 1/4		187 5/8	84 1/2							46	7	3 1/4
12BRF360-8	12	360	8	3776	5	14200	3/16" PLATE	26	59	74 1/4	144	91	141	357 5/8	108	17 3/4	207 15/16	84	97	8	3	6 5/8	5 1/8	97	45	6	5 3/4
12BRF360-10			10	4712		15010	3/16" PLATE						146	374 1/8	119 1/2		210 7/16	86 1/2							50	7	5 1/4
12BRF360-12			12	5656		16400	3/16" PLATE						151	402 7/8	143 1/4		212 15/16	89							55	8	4 3/4
13BRF416-8	13	416	8	4364	5	16700	3/16" PLATE	29	65	80 1/4	156	101 5/16	144	372 5/8	108	19 3/8	219 13/16	85 1/2	105 1/2	10	4	3 5/8	3 5/8	105	48	7	4 1/4
13BRF416-10			10	5445		17750	3/16" PLATE						150	390 1/8	119 1/2		222 13/16	88 1/2							54	8	4 1/4
13BRF416-12			12	6535		19200	3/16" PLATE						155	418 7/8	143 1/4		225 5/16	91							59	9	3 3/4
14BRF496-8	14	496	8	5203	5	18000	3/16" PLATE	31	70	86 1/4	168	111 3/4	149	389 5/8	108	21	232 3/4	88	114	11	4	3 1/8	4 5/8	115	53	8	3 3/4
14BRF496-10			10	6493		19100	3/16" PLATE						155	407 1/8	119 1/2		235 3/4	91							59	9	3 3/4
14BRF496-12			12	7792		20600	3/16" PLATE						160	435 7/8	143 1/4		238 1/4	93 1/2							64	10	3 1/4



DISCHARGE DIAMETER	ADDITIONAL HEIGHT
Ø40 in	0
Ø24 in	13 3/8
Ø20 in	16 13/16
Ø18 in	18 9/16
Ø16 in	20 5/16
Ø14 in	22
Ø12 in	23 3/4
Ø10 in	25 1/4



- NOTE:**
- FAN MOTOR: XPFC , 230/460/3/60 (SEE CHART FOR HP).
 - DRIVE MOTOR: 1/4 HP, 1700 RPM, XPFC, 230/460/3/60
 - NO COMPRESSED AIR REQUIRED.
 - CONTINUOUS WELD CONSTRUCTION FROM 10 GAUGE OR 3/16" PLATE HRS.
 - CLOTH AREA PER BAG:
 BAG LENGTH OF 8' = 10.49 FT²
 BAG LENGTH OF 10' = 13.09 FT²
 BAG LENGTH OF 12' = 15.71 FT²
 - DIMENSIONS SUBJECT TO CHANGE WITHOUT NOTICE.

TITLE: Reverse Air Baghouse 5 with High Entry Inlet & Pump
 For Preliminary use only
 Refer to System Drawings for Details

OPTIONS:
 Construction : _____
 Paint Color : _____
 Installation Available: _____

DRAWN BY: TEB
CHECKED BY: PCS
DATE: 03/15/11
SCALE: 1 = 32

IMPERIAL
 SYSTEMS, INC.

Imperial Systems, Inc.
 300 Imperial Drive
 Jackson Center, PA 16133
 Phone 724-662-2801
 Fax 724-662-2803
 www.isystemsweb.com

PRODUCT: Reverse Air Baghouse 5 HEP