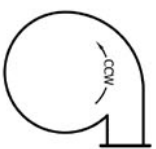
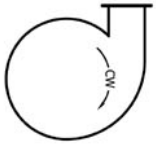
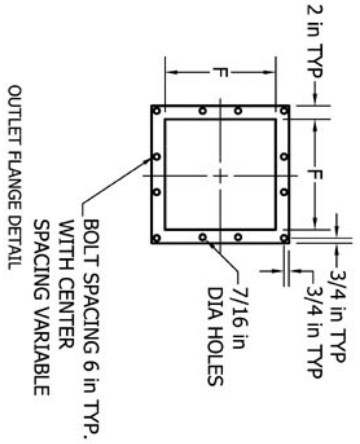
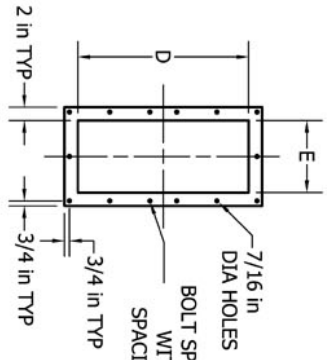
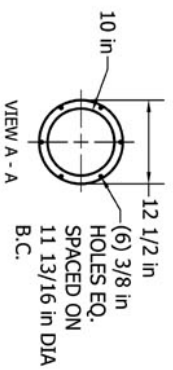
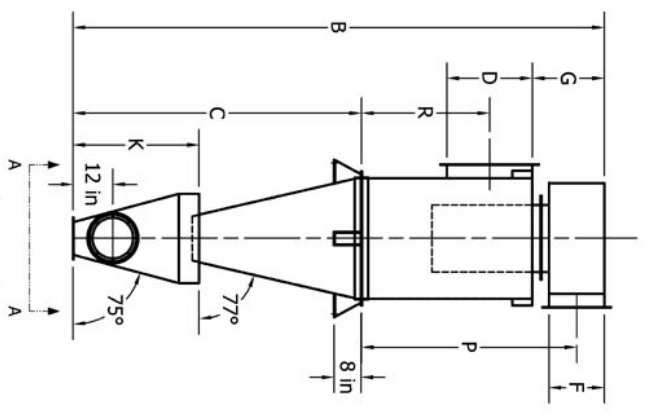
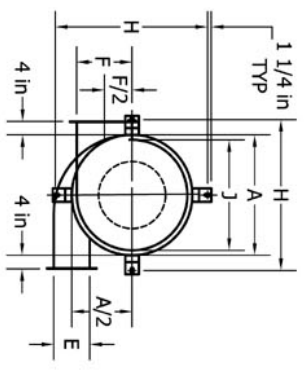


MODEL	CFM	WEIGHT LBS.	A	B	C	D	E	F	G	H	J	K	P	R
ISUHE21	2100-2500	366	21	94 11/16	50 3/16	15	6	9 1/2	13 7/8	29 3/4	19	25 3/4	39 3/4	22 1/2
ISUHE24	2800-3200	454	24	108 9/16	56 13/16	18	6 1/2	10 3/4	15 1/8	32 13/16	21 1/2	25 3/4	46 3/8	27
ISUHE27	3500-4000	582	27	120 1/2	63 1/2	20	7 1/4	12	16 3/8	35 15/16	24	37 5/8	51	30
ISUHE30	4200-4800	689	30	132 3/8	70 1/8	22	8	13 1/4	17 5/8	38 15/16	26 1/2	37 5/8	55 5/8	33
ISUHE33	5300-6100	828	33	144 11/16	76 11/16	24	9 1/4	15	19 3/8	42	30	37 5/8	60 1/2	36
ISUHE36	6600-7600	945	36	153 5/8	81 1/8	25 1/2	10 3/4	16 1/2	20 7/8	45 1/16	33	37 5/8	64 1/4	38 1/4
ISUHE39	7700-8800	1132	39	174 3/16	97 7/16	27	11 3/4	17 3/4	22 1/8	48 1/16	35 1/2	39 7/16	67 7/8	40 1/2
ISUHE43	9400-10,800	1328	43	188 3/4	104	30	13	19 3/4	24 1/8	52 1/8	39 1/2	39 7/16	74 7/8	45
ISUHE47	10,200-12,600	1532	47	202 15/16	110 11/16	33	13 3/4	21 1/4	25 5/8	56 3/16	42 1/2	39 7/16	81 5/8	49 1/2



NOTE:
 STANDARD CONSTRUCTION IS 12GA. CARBON STEEL.
 OPTIONAL MATERIALS:
 10GA. CARBON STEEL AND STAINLESS STEEL
 OPTIONAL FLANGES ARE AVAILABLE
 STANDARD ANGLE FLANGES ARE AVAILABLE
 FLANGES ARE 3/16" THICK K&B BOLT PATTERN
 STANDARD PAINT IS IMPERIAL WHITE
 SURGE HOPPERS ARE AVAILABLE UPON REQUEST
 ALL DIMENSIONS ARE IN INCHES

TITLE:
ISUHE Series Cyclones
 For Preliminary use only
 Refer to System Drawings for Details

OPTIONS:
 Construction: _____
 Flanges: _____
 Paint Color: _____
 Surge Hopper: _____



Imperial Systems, Inc.
 300 Imperial Drive
 Jackson Center, PA 16133
 Phone 724-662-2801
 Fax 724-662-2803
 www.issystemsweb.com

DRAWN BY: TEB
 CHECKED BY: RR
 DATE: 04/14/08
 SCALE: 1 = 32

PRODUCT: ISUHE Series Cyclones