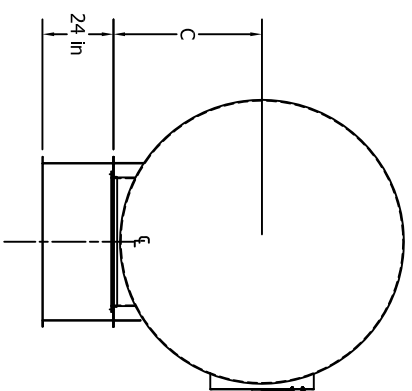
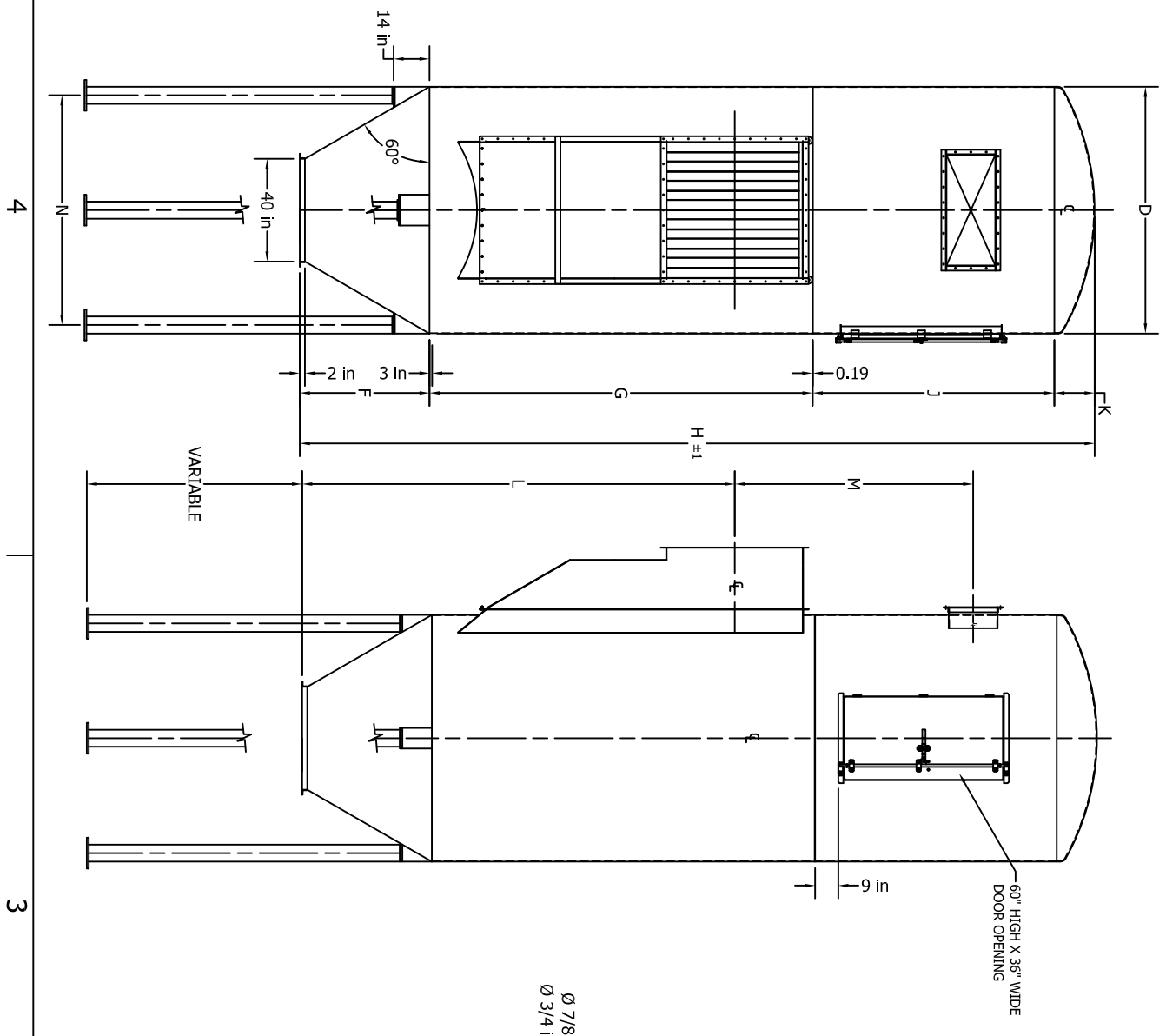


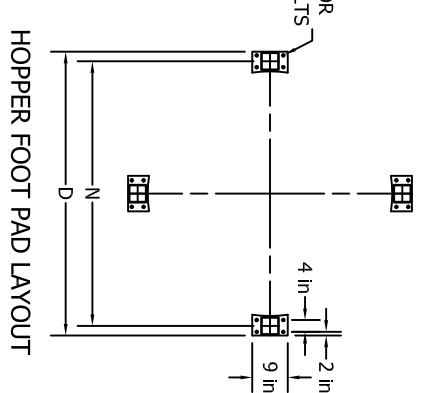
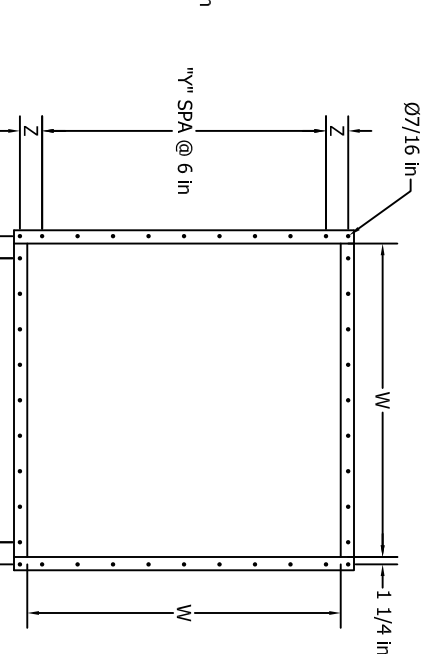
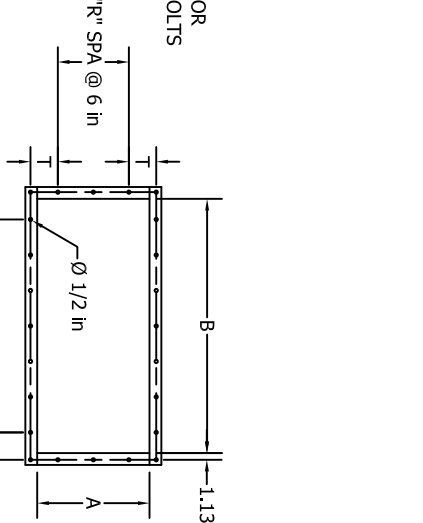
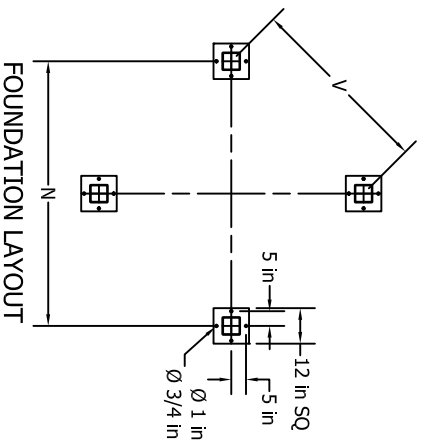
MODEL PROPERTIES			FILTER DIMENSIONS																							
MODEL	UNIT DIA. FT.	NO. BAGS	BAG LENGTH FT.	CLOTH AREA (SQ. FT.)	BLOWER H.P.	WT (Lbs.)	A	B	C	D	F	G	H	J	K	L	M	N	P	R	S	T	V	W	Y	Z
7-112BRF96	7	112	8	1173	3	7400	18	40	33	84	40.32	121	274	94	15.75	148.32	65.5	77.5	6	2	3.250	4.250	54.80	27	3	5.75
7-112BRF120	7	112	10	1466	3	8000	18	40	33	84	40.32	125	298	114	15.75	149.32	89.5	77.5	6	2	3.250	4.250	54.80	29	4	3.75
7-112BRF144	7	112	12	1759	3	8600	18	40	33	84	40.32	129	326	138	15.32	151.32	113.5	77.5	6	2	3.250	4.250	54.80	33	4	5.75
8-153BRF8	8	153	8	1603	3	8500	21	47	43.5	96	61.00	125	300	138	17.0	170	65.5	101.5	7	2	3.625	5.625	71.77	29	4	3.75
8-153BRF10	8	153	10	2002	3	9200	21	47	43.5	96	61.00	129	324.25	114	17.25	172	89.5	101.5	7	2	3.625	5.625	71.77	33	4	5.75
8-153BRF12	8	153	12	2403	3	9800	21	47	43.5	96	61.00	132	351.25	138	17.25	173.5	113.5	101.5	7	2	3.625	5.625	71.77	36	5	4.25
10-255BRF8	10	255	8	2672	5	11300	24	54	48.0	120	71.25	134	321.25	114	19	184.75	65.5	113.5	8	3	4.125	4.125	80.26	38	5	5.25
10-255BRF10	10	255	10	3337	5	12100	24	54	48.0	120	71.25	138	345.25	114	19	186.75	89.8	113.5	8	3	4.125	4.125	80.26	42	6	4.25
10-255BRF12	10	255	12	4006	5	13000	24	54	48.0	120	71.25	142	373.25	138	19	188.75	113.5	113.5	8	3	4.125	4.125	80.26	46	7	3.25
12-361BRF8	12	361	8	3783	5	14200	26	59	53.0	144	81.75	141	340.25	94	20.5	198.75	65.5	125.5	8	3	6.625	5.125	88.74	45	6	5.75
12-361BRF10	12	361	10	4725	5	15010	26	59	53.0	144	81.75	146	365.25	114	20.5	201.25	89.5	125.5	8	3	6.625	5.125	88.74	50	7	5.25
12-361BRF12	12	361	12	5671	5	16400	26	59	53.0	144	81.75	151	394.25	138	20.5	203.75	113.5	125.5	8	3	6.625	5.125	88.74	55	8	4.75
13-416BRF8	13	416	8	4359	5	16700	29	65	57.5	156	92.00	144	355	94	22	210.5	65.5	137.5	10	4	3.625	3.625	97.23	48	7	4.25
13-416BRF10	13	416	10	5445	5	17750	29	65	57.5	156	92.00	150	381	114	22	213.5	89.5	137.5	10	4	3.625	3.625	97.23	54	8	4.25
13-416BRF12	13	416	12	6335	5	18000	29	65	57.5	156	92.00	155	410	138	22	216	113.5	137.5	10	4	3.625	3.625	97.23	59	9	3.75
14-496BRF8	14	496	8	5194	5	18000	31	70	62.5	168	102.50	149	372.25	94	23.75	223.5	65.5	149.5	11	4	3.125	4.625	105.71	53	8	3.75
14-496BRF10	14	496	10	6492	5	19100	31	70	62.5	168	102.50	155	398.25	114	23.75	226.5	89.5	149.5	11	4	3.125	4.625	105.71	59	9	3.75
14-496BRF12	14	496	12	7791	5	20600	31	70	62.5	168	102.50	160	427.25	138	23.75	229	113.5	149.5	11	4	3.125	4.625	105.71	64	10	3.25



B



A



- NOTE:
1. FAN MOTOR: XPFC, 230/460/3/60 (SEE CHART FOR HP).
  2. DRIVE MOTOR: 1 HP, 1140 RPM, XPFC, 230/460/3/60
  3. NO COMPRESSED AIR REQUIRED.
  4. CONTINUOUS WELD CONSTRUCTION FROM 10 AND 7 GA HRS.
  5. DIMENSIONS SUBJECT TO CHANGE WITHOUT NOTICE.

**TITLE:**  
Reverse Air Baghouse 4.5  
with High Entry Inlet & Pump

*For Preliminary use only  
Refer to System Drawings for Details*

**OPTIONS:**

Construction : \_\_\_\_\_

Paint Color: \_\_\_\_\_

Installation Available: \_\_\_\_\_



*Imperial Systems, Inc.*  
300 Imperial Drive  
Jackson Center, PA 16133  
Phone 724-662-2801  
Fax 724-662-2803  
www.isystemsweb.com

**DRAWN BY:** TEB    **CHECKED BY:** RR    **DATE:** 16APR10    **SCALE:** 1 = 32    **PRODUCT:** Reverse Air Baghouse 4.5 HEP

2

1