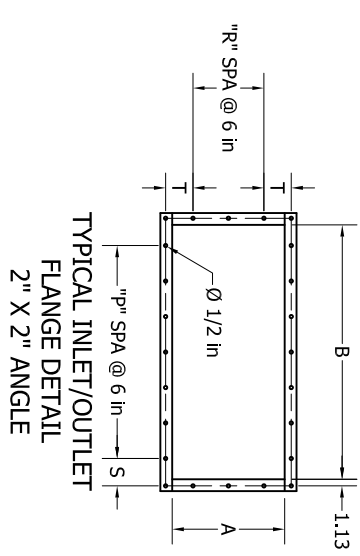
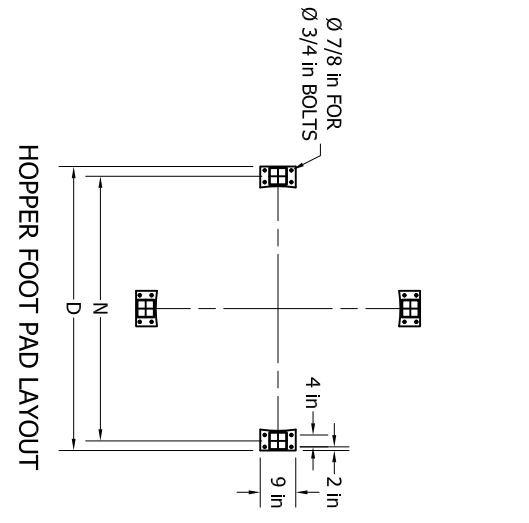
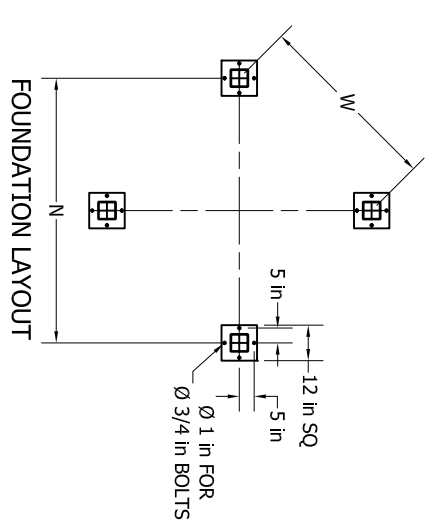
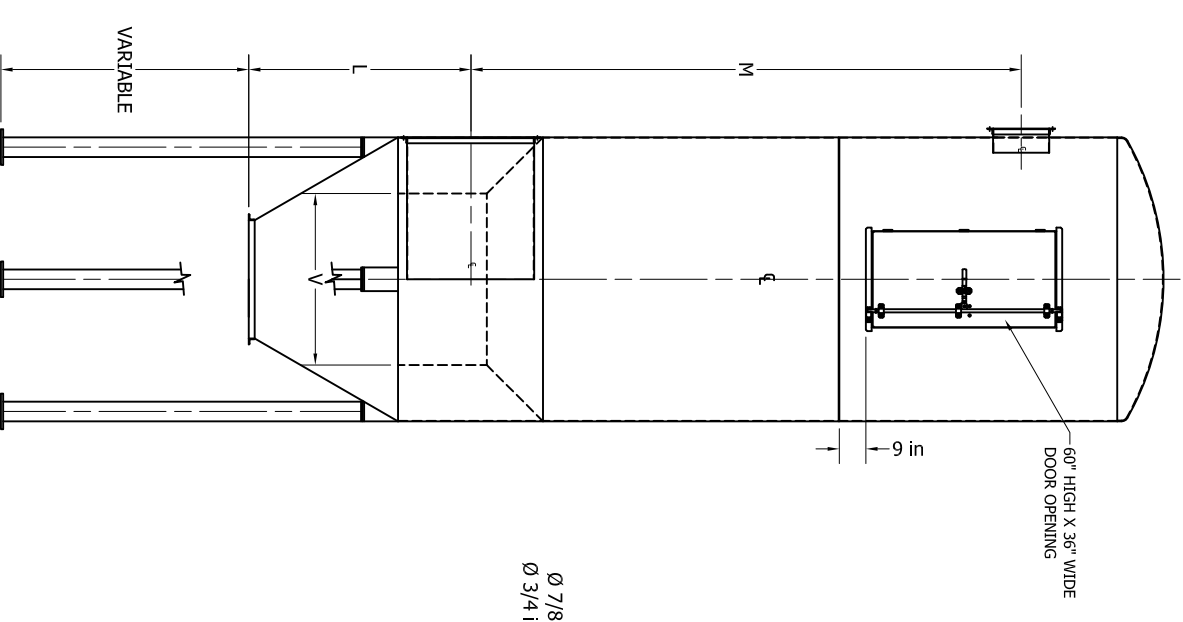
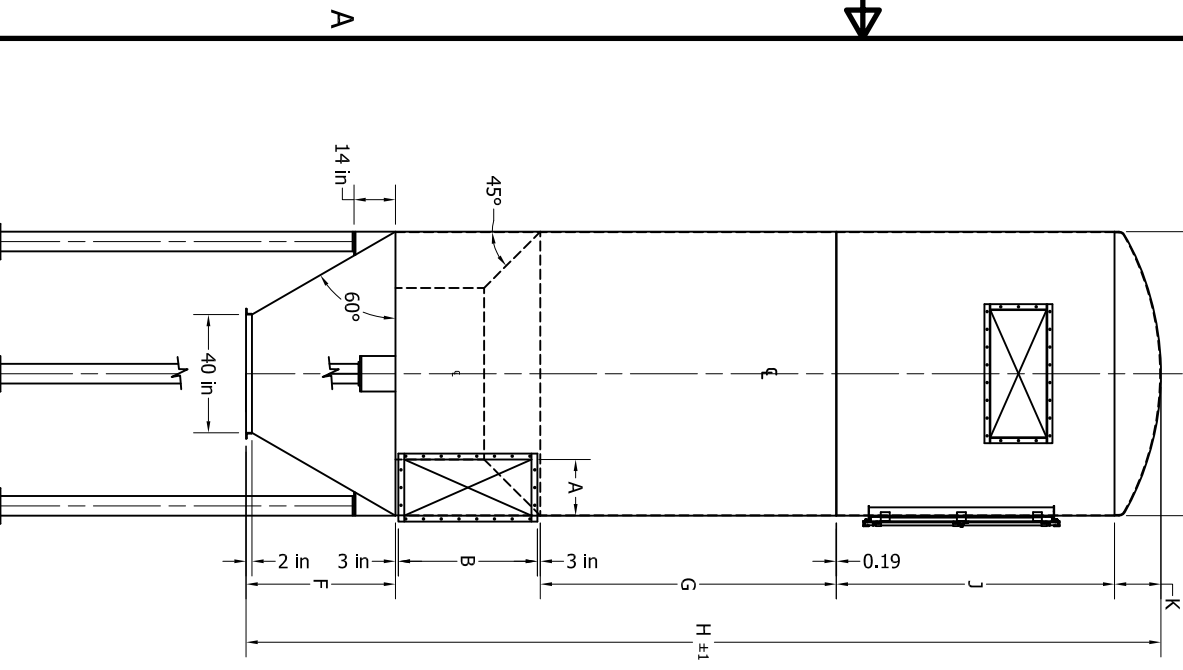


MODEL PROPERTIES			FILTER DIMENSIONS																					
MODEL	UNIT DIA. FT.	NO. BAGS	BAG LENGTH FT.	CLOTH AREA (SQ. FT.)	FAN HP	WT (lbs.)	A	B	C	D	F	G	H	J	K	L	M	N	P	R	S	T	V	W
8-120BRF8	8	120	8	1572	10	5724	19	43	38.5	96	50.50	100.00	310	94	15.75	73	186.19	89.5	6	2	4.625	4.63	71	63.29
8-120BRF10	8	120	10	1986	10	6268	19	43	38.5	96	50.50	124.00	354	114	15.75	73	210.19	89.5	6	2	4.625	4.63	71	63.29
8-120BRF12	8	120	12	2355	10	6891	19	43	38.5	96	50.50	148.00	402	138	15.75	73	234.19	89.5	6	2	4.625	4.63	71	63.29
9-152BRF8	9	152	8	1991	8	5937	21	47	43.5	108	61.00	100.00	326	94	17.25	85.50	187.19	101.5	7	2	3.625	5.63	80	71.77
9-152BRF10	9	152	10	2492	8	6550	21	47	43.5	108	61.00	124.00	370	114	17.25	85.50	211.19	101.5	7	2	3.625	5.63	80	71.77
9-152BRF12	9	152	12	2984	8	7250	21	47	43.5	108	61.00	148.00	418	138	17.25	85.50	235.19	101.5	7	2	3.625	5.63	80	71.77
10-189BRF8	10	189	8	2476	15	7021	24	54	48.0	120	71.25	100.00	345	94	19	99.25	189.19	113.5	8	3	4.125	4.13	88	80.26
10-189BRF10	10	189	10	3100	15	7701	24	54	48.0	120	71.25	124.00	389	114	19	99.25	213.19	113.5	8	3	4.125	4.13	88	80.26
10-189BRF12	10	189	12	3710	15	8479	24	54	48.0	120	71.25	148.00	437	138	19	99.25	237.19	113.5	8	3	4.125	4.13	88	80.26
11-231BRF8	11	231	8	3026	8	8034	26	59	53.0	132	81.75	100.00	362	94	20.5	112.25	190.69	125.5	8	3	6.625	5.13	97	88.74
11-231BRF10	11	231	10	3788	8	8782	26	59	53.0	132	81.75	124.00	406	114	20.5	112.25	214.69	125.5	8	3	6.625	5.13	97	88.74
11-231BRF12	11	231	12	4534	8	9637	26	59	53.0	132	81.75	148.00	454	138	20.5	112.25	238.69	125.5	8	3	6.625	5.13	97	88.74
12-272BRF8	12	272	8	3418	20	9343	29	65	57.5	144	92.00	100.00	380	94	22	127.5	192.19	137.5	10	4	3.625	3.63	105	97.23
12-272BRF10	12	272	10	4460	20	10159	29	65	57.5	144	92.00	124.00	424	114	22	127.5	216.19	137.5	10	4	3.625	3.63	105	97.23
12-272BRF12	12	272	12	5339	20	11093	29	65	57.5	144	92.00	148.00	472	138	22	127.5	240.19	137.5	10	4	3.625	3.63	105	97.23
13-324BRF8	13	324	8	4244	20	10598	31	70	62.5	156	102.50	100.00	397	94	23.75	138.5	193.69	149.5	11	4	3.125	4.63	115	105.71
13-324BRF10	13	324	10	5313	20	11482	31	70	62.5	156	102.50	124.00	441	114	23.75	138.5	217.69	149.5	11	4	3.125	4.63	115	105.71
13-324BRF12	13	324	12	6360	20	12493	31	70	62.5	156	102.50	148.00	489	138	23.75	138.5	241.69	149.5	11	4	3.125	4.63	115	105.71
14-378BRF8	14	378	8	4651	25	11991	34	77	67.0	168	112.75	100.00	416	94	25.25	152.25	195.69	161.5	12	5	3.625	3.13	123	114.20
14-378BRF10	14	378	10	6199	25	12944	34	77	67.0	168	112.75	124.00	460	114	25.25	152.25	219.69	161.5	12	5	3.625	3.13	123	114.20
14-378BRF12	14	378	12	7420	25	14033	34	77	67.0	168	112.75	148.00	508	138	25.25	152.25	243.69	161.5	12	5	3.625	3.13	123	114.20



- NOTE:
1. FAN MOTOR: XPFC, 230/460/3/60 (SEE CHART FOR HP).
 2. DRIVE MOTOR: 1 HP, 1140 RPM, XPFC, 230/460/3/60
 3. NO COMPRESSED AIR REQUIRED.
 4. CONTINUOUS WELD CONSTRUCTION FROM 10 AND 7 GA HRS.
 5. DIMENSIONS SUBJECT TO CHANGE WITHOUT NOTICE.

TITLE:
Reverse Air Baghouse
For Preliminary use only
Refer to System Drawings for Details

OPTIONS:
Construction : _____
Paint Color: _____
Installation Available: _____

DRAWN BY: TEB
CHECKED BY: RR
DATE: 04/14/08
SCALE: 1 = 32

PRODUCT: Reverse Air Baghouse

Imperial Systems, Inc.
300 Imperial Drive
Jackson Center, PA 16133
Phone 724-662-2801
Fax 724-662-2803
www.isystemsweb.com