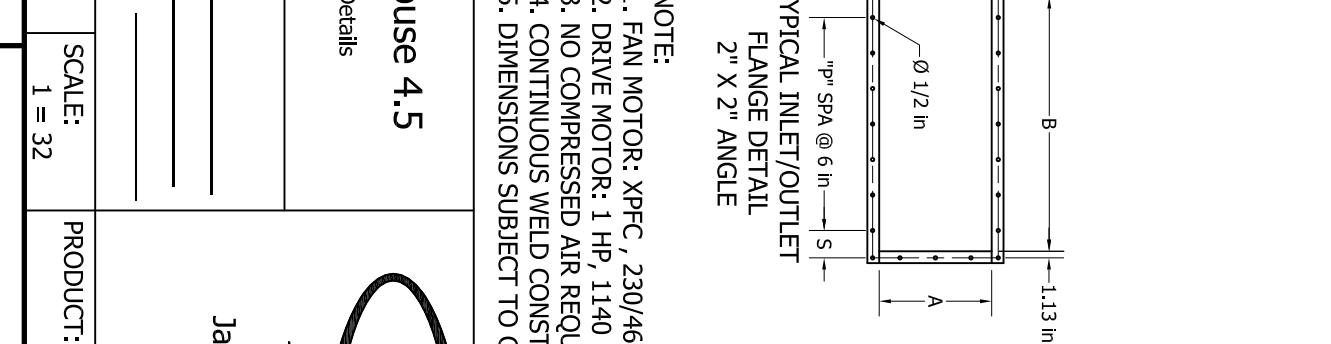
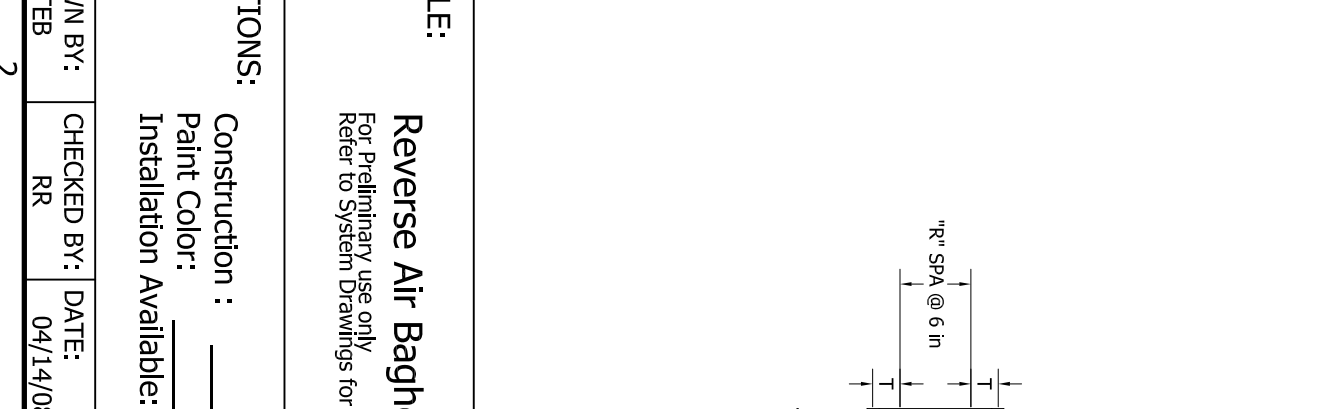
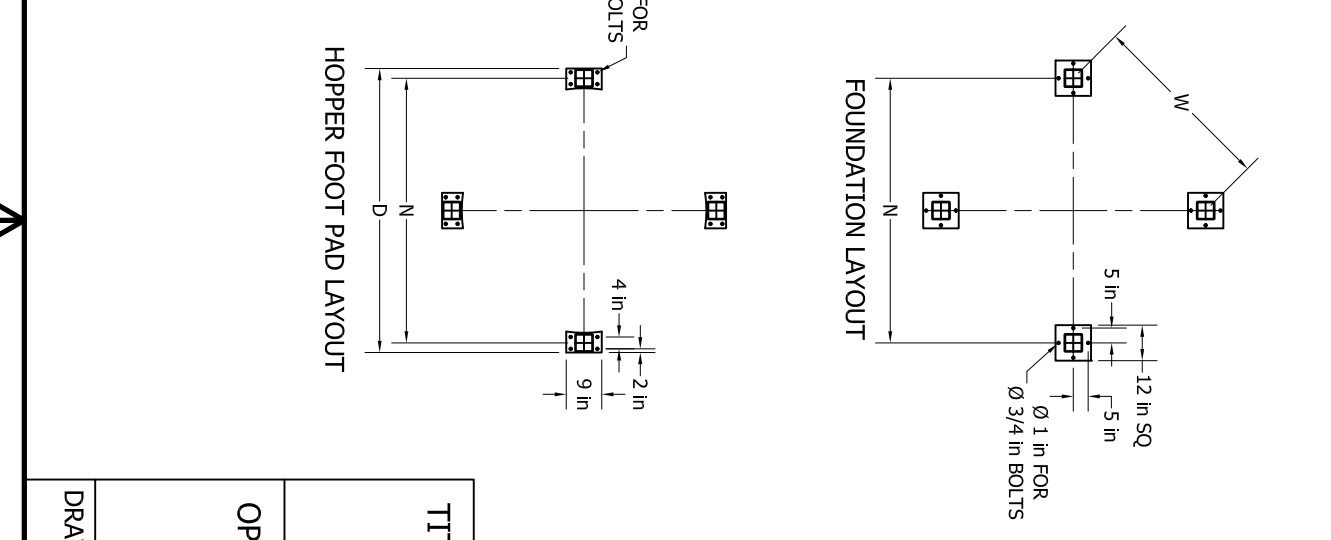
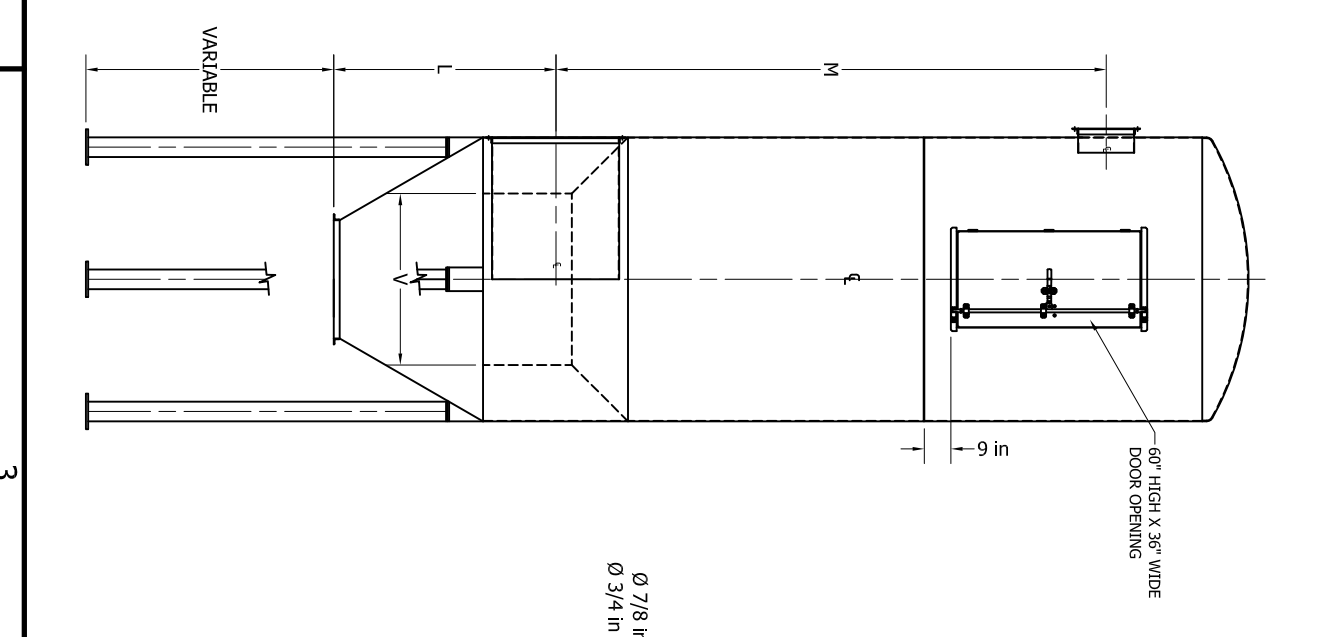
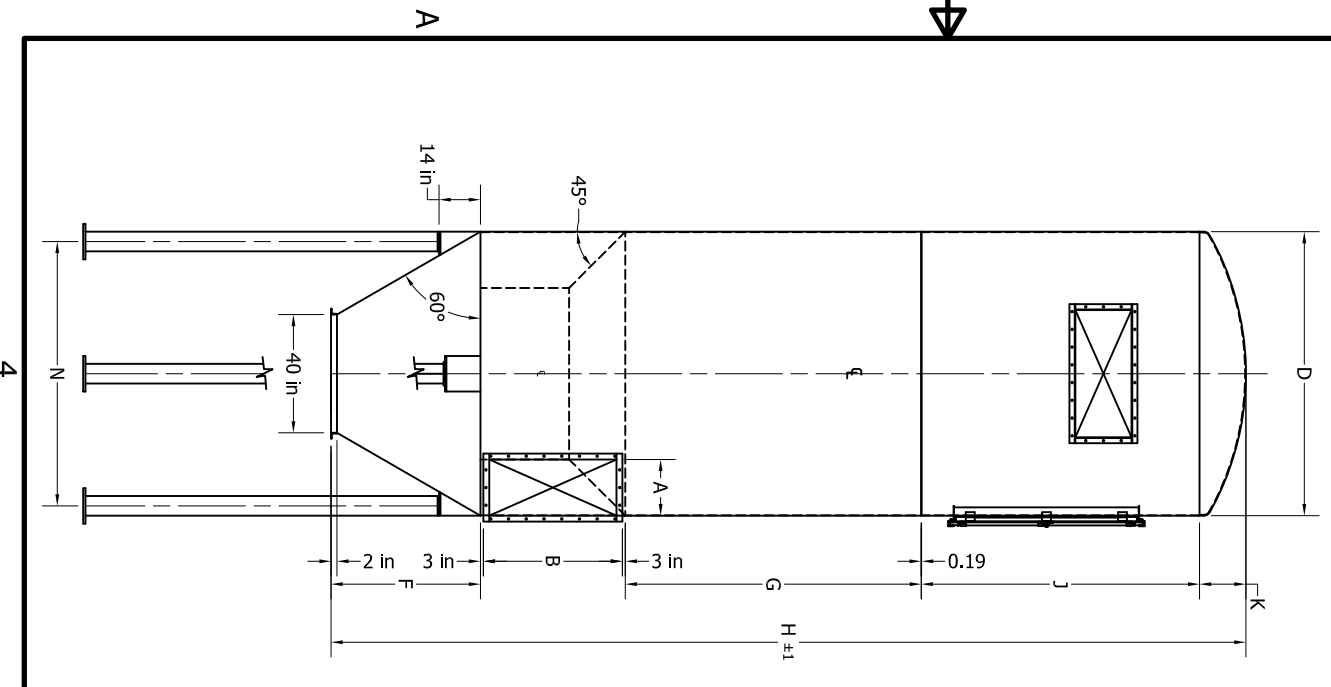
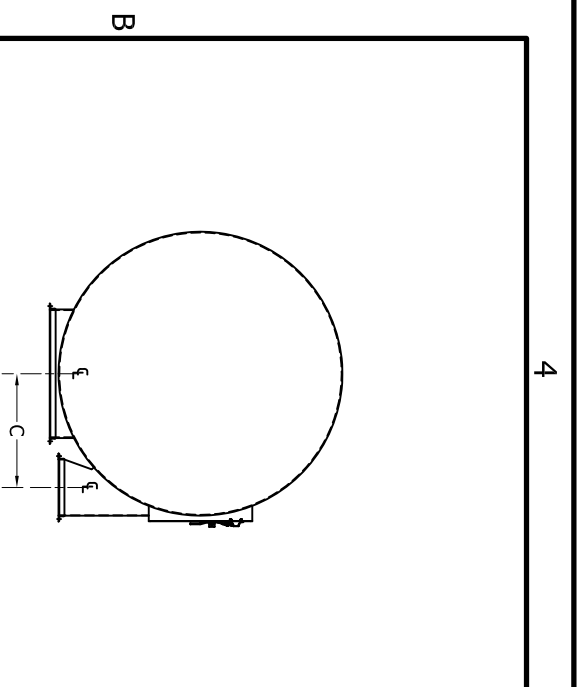


MODEL	UNIT DIA. FT.	NO. BAGS	MODEL PROPERTIES			FILTER DIMENSIONS																		
			BAG LENGTH FT.	CLOTH AREA (SQ. FT.)	FAN HP	WT (lbs.)	A	B	C	D	F	G	H	J	K	L	M	N	P	R	S	T	V	W
7-112BRF96	7	112	8	1173	10	7400	18	40	33	84	40.32	100.00	296	94	15.75	63.25	186.19	77.5	6	2	3.250	4.250	63	54.80
7-112BRF120	7	112	10	1466	10	8000	18	40	33	84	40.32	124.00	340	114	15.75	63.25	210.19	77.5	6	2	3.250	4.250	63	54.80
7-112BRF144	7	112	12	1759	10	8600	18	40	33	84	40.32	148.00	388	138	15.75	63.25	234.19	77.5	6	2	3.250	4.250	63	54.80
8-153BRF8	8	153	8	1603	10	8500	21	47	43.5	96	61.00	100.00	326	94	17.25	85.50	187.19	101.5	7	2	3.625	5.625	80	71.77
8-153BRF10	8	153	10	2002	10	9200	21	47	43.5	96	61.00	124.00	370	114	17.25	85.50	211.19	101.5	7	2	3.625	5.625	80	71.77
8-153BRF12	8	153	12	2403	10	9800	21	47	43.5	96	61.00	148.00	418	138	17.25	85.50	235.19	101.5	7	2	3.625	5.625	80	71.77
10-255BRF8	10	255	8	2672	15	11300	24	54	48.0	120	71.25	100.00	345	94	19	99.25	189.19	113.5	8	3	4.125	4.125	88	80.26
10-255BRF10	10	255	10	3337	15	12100	24	54	48.0	120	71.25	124.00	389	114	19	99.25	213.19	113.5	8	3	4.125	4.125	88	80.26
10-255BRF12	10	255	12	4006	15	13000	24	54	48.0	120	71.25	148.00	437	138	19	99.25	237.19	113.5	8	3	4.125	4.125	88	80.26
12-361BRF8	12	361	8	3783	20	14200	26	59	53.0	144	81.75	100.00	362	94	20.5	112.25	190.69	125.5	8	3	6.625	5.125	97	88.74
12-361BRF10	12	361	10	4725	20	15010	26	59	53.0	144	81.75	124.00	406	114	20.5	112.25	214.69	125.5	8	3	6.625	5.125	97	88.74
12-361BRF12	12	361	12	5671	20	16400	26	59	53.0	144	81.75	148.00	454	138	20.5	112.25	238.69	125.5	8	3	6.625	5.125	97	88.74
13-416BRF8	13	416	8	4359	20	16700	29	65	57.5	156	92.00	100.00	380	94	22	127.5	192.19	137.5	10	4	3.625	3.625	105	97.23
13-416BRF10	13	416	10	5445	20	17750	29	65	57.5	156	92.00	124.00	424	114	22	127.5	216.19	137.5	10	4	3.625	3.625	105	97.23
13-416BRF12	13	416	12	6535	20	19200	29	65	57.5	156	92.00	148.00	472	138	22	127.5	240.19	137.5	10	4	3.625	3.625	105	97.23
14-496BRF8	14	496	8	5194	25	18000	31	70	62.5	168	102.50	100.00	397	94	23.75	138.5	193.69	149.5	11	4	3.125	4.625	115	105.71
14-496BRF10	14	496	10	6492	25	19100	31	70	62.5	168	102.50	124.00	441	114	23.75	138.5	217.69	149.5	11	4	3.125	4.625	115	105.71
14-496BRF12	14	496	12	7791	25	20600	31	70	62.5	168	102.50	148.00	489	138	23.75	138.5	241.69	149.5	11	4	3.125	4.625	115	105.71



NOTE:

1. FAN MOTOR: XPFC, 230/460/3/60 (SEE CHART FOR HP).
2. DRIVE MOTOR: 1 HP, 1140 RPM, XPFC, 230/460/3/60
3. NO COMPRESSED AIR REQUIRED.
4. CONTINUOUS WELD CONSTRUCTION FROM 10 AND 7 GA HRS.
5. DIMENSIONS SUBJECT TO CHANGE WITHOUT NOTICE.

TITLE:
Reverse Air Baghouse 4.5

For Preliminary use only
Refer to System Drawings for Details

OPTIONS:
Construction : _____
Paint Color: _____
Installation Available: _____

DRAWN BY: TEB
CHECKED BY: RR
DATE: 04/14/08
SCALE: 1 = 32

PRODUCT: Reverse Air Baghouse 4.5

Imperial Systems, Inc.
300 Imperial Drive
Jackson Center, PA 16133
Phone 724-662-2801
Fax 724-662-2803
www.isysystemsweb.com